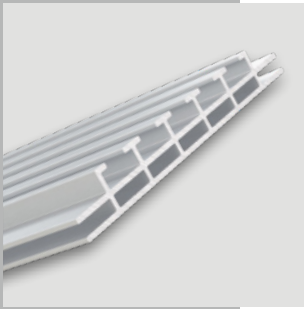


COUNTER ONE



- mobiles LED Thekensystem in ABS Transportkoffer

- beleuchtete Front - Rahmenformat 100x100cm
- einfache Montage dank Plug & Play Lichttechnik
- homogene Ausleuchtung dank qualitativ hochwertiger OSRAM LED Technik mit speziell angepasster Linsenform
- inkl. Zwischenfach und schwarzer Deckplatte
- Systemmaße inkl. Füße BxHxT 100x101,5x48 cm
- ABS Transportkoffer BxHxD 39x30x116 cm mit Schaumstoffeinlagen, Rollen und Griff
- ca. 30 kg Transportgewicht

- mobile LED counter in ABS hardcase

- illuminated front - frame size 100x100 cm
- easy installation thanks to plug & play lighting technology
- even lighting illumination - using OSRAM LED technique including a specially adapted lens
- incl. shelf and black counter top
- system dimensions incl. bases WxHxD 100x101,5x48 cm
- ABS hardcase WxHxD 39x30x116 cm with special foam lining, wheels and handle
- approx. 30 kg transport weight

OSRAM
LED Technology included

Profildesign / profile design

